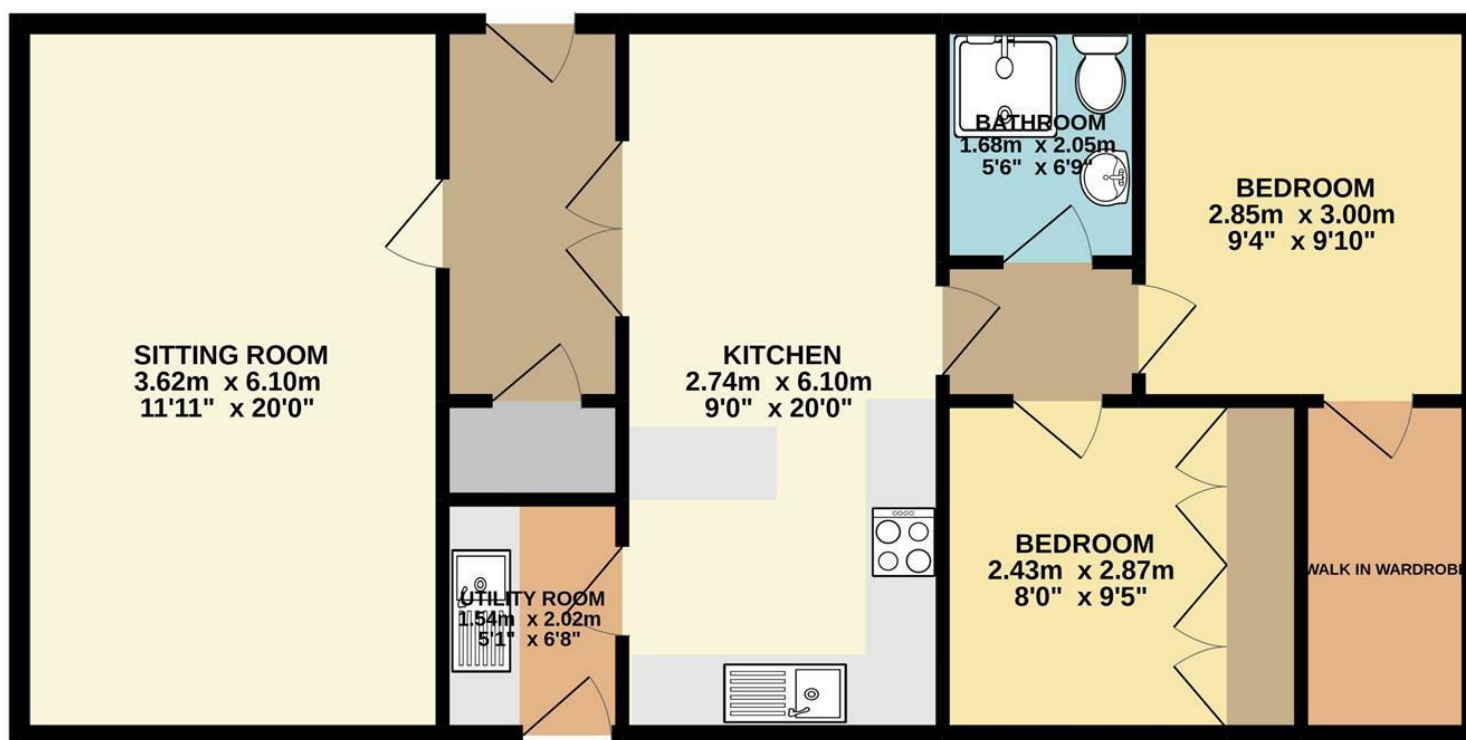




Beacon Road | Norwich | NR11  
Offers In Excess Of £75,000

abbotFox

GROUND FLOOR  
75.9 sq.m. (817 sq.ft.) approx.



TOTAL FLOOR AREA: 75.9 sq.m. (817 sq.ft.) approx.

Whilst every attempt has been made to ensure the accuracy of the floorplan contained here, measurements of doors, windows, rooms and any other items are approximate and no responsibility is taken for any error, omission or mis-statement. This plan is for illustrative purposes only and should be used as such by any prospective purchaser. The services, systems and appliances shown have not been tested and no guarantee as to their operability or efficiency can be given.  
Made with Metropix ©2021

Energy Efficiency Rating		
	Current	Potential
Very energy efficient - lower running costs		
(92 plus) <b>A</b>		
(81-91) <b>B</b>		
(69-80) <b>C</b>		
(55-68) <b>D</b>		
(39-54) <b>E</b>		
(21-38) <b>F</b>		
(1-20) <b>G</b>		
Not energy efficient - higher running costs		
<b>England &amp; Wales</b>	EU Directive 2002/91/EC	

Disclaimer – In accordance with the Property Misdescriptions Act, the company gives notice that all descriptions, references to condition, necessary permissions for use and other details are given in good faith and believed to be correct, but any intending lessees do not rely on them as statements of fact, but must satisfy themselves by inspection or other means, as to their accuracy.



abbotFox presents this stylish park home, that forms part of the popular Trimmingham House Park site. With a selection of on-site amenities, including swimming pool and clubhouse, this site also offers a 10 and half month season.

The accommodation comprises; an inviting entrance hall, spacious lounge, kitchen diner, utility, two bedrooms, one with a walk in wardrobe and a shower room. Occupying a prime position, with Sea Views, this plot offers an enclosed garden area, and parking space.

An ideal opportunity for any buyer looking for a coastal holiday home, or investment opportunity, an internal viewing comes highly recommended.

